

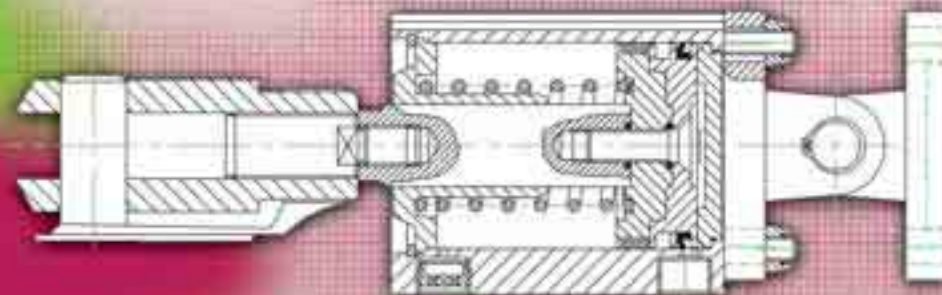
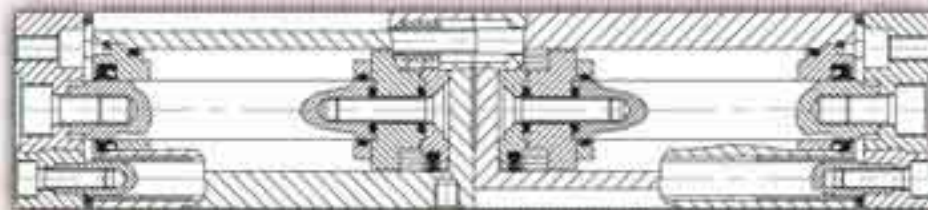
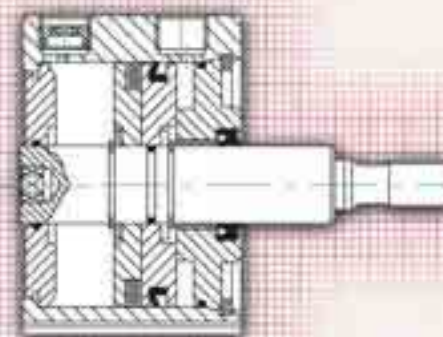
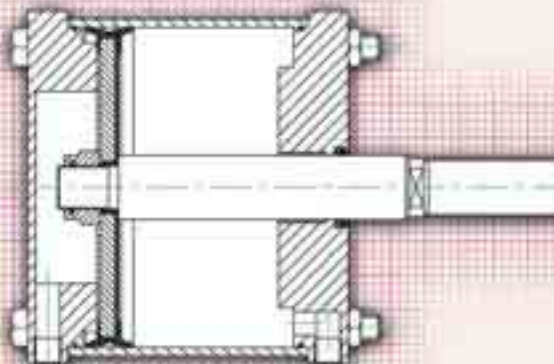
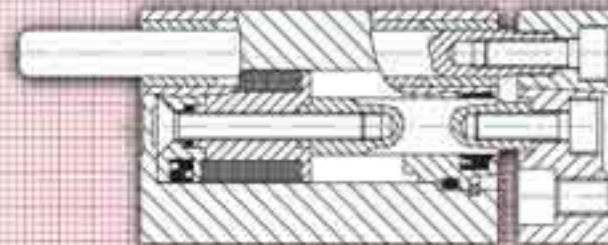
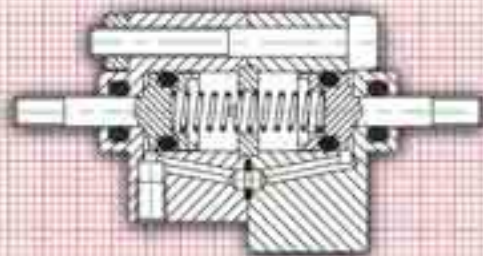
## CILINDRI A CORSA BREVE

- intercambiabili
- con guide maggiorate
- profili ribassati
- ingressi aria personalizzati
- steli maggiorati
- paracolpi
- testate avvitate
- guarnizioni speciali



## SHORT STROKE CYLINDERS

- interchangeable
- oversize shaft
- low profile
- customized inlet ports
- oversize piston rod
- shock pads
- screwed end cup
- special seals



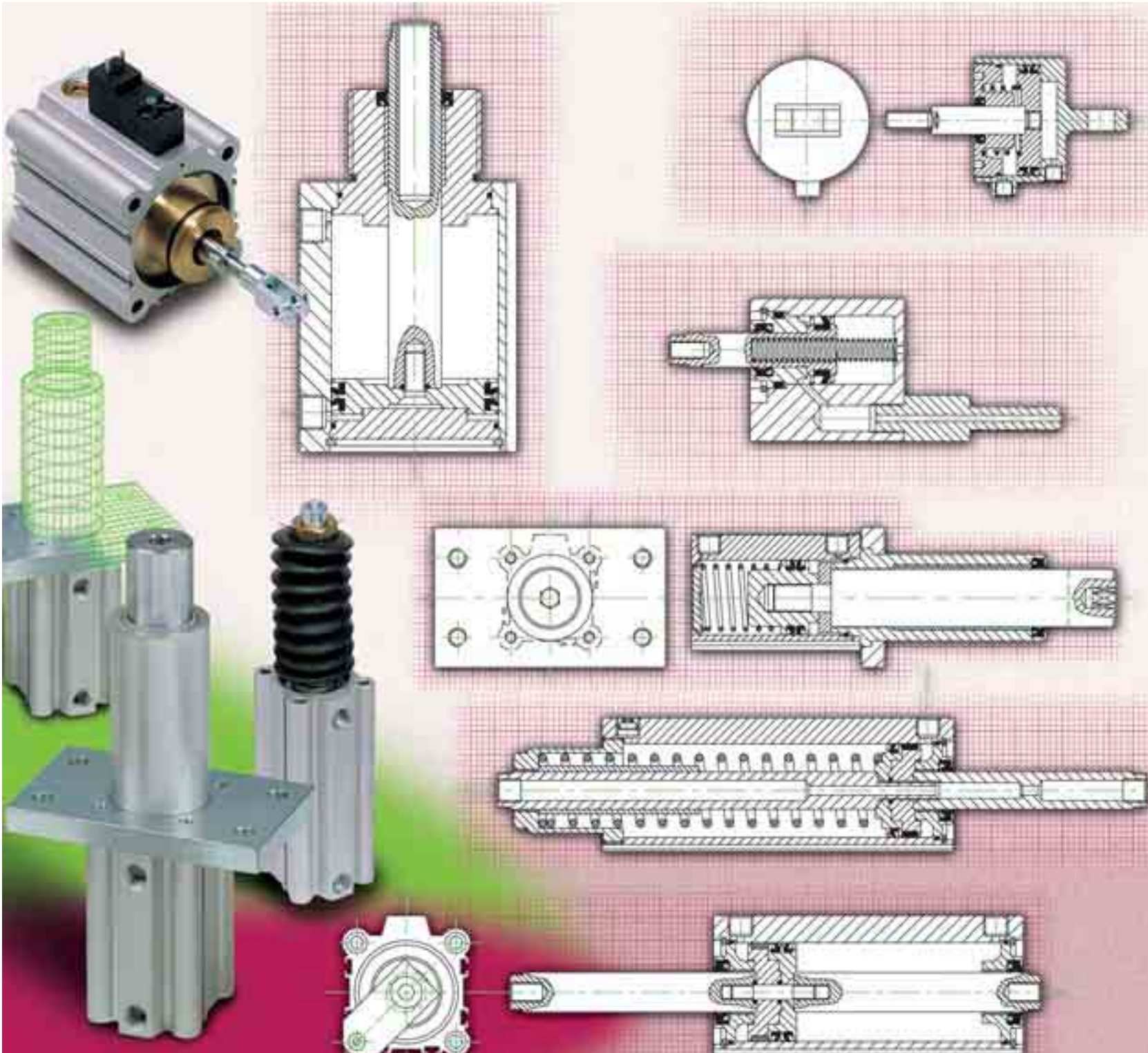


## CILINDRI A CORSA BREVE

- per temperature estreme
- stopper
- tandem
- fissaggi personalizzati
- blocco meccanico
- soffietti di gomma
- regolazione della corsa
- molle tarabili
- ammortizzi pneumatici

## SHORT STROKE CYLINDERS

- for extreme temperature
- stopper
- tandem
- customized mounting
- mechanical lock
- rubber cover
- stroke regulation
- adjustable springs
- pneumatic cushions





DA  
DAM

**farbo**  
PNEUMATIC

**COMPONENTI SPECIALI • SPECIAL VERSIONS  
SONDERVERSIONEN • EXECUTIONS SPÉCIALES**

**farbo**  
SPECIAL

DAP  
DAPM

DAF  
DAFM

DAR  
DARM

DAD  
DADM

SA

SAF

DAS

NH  
SF

KIT

DE

SE

SEL

SEF

**SPECIAL**



# SCHEDA INFORMATIVA PER I CILINDRI CORSA BREVE SHORT-STROKE CYLINDER APPLICATION SHEET

CLIENTE  
CUSTOMER

SOCIETÀ  
COMPANY

CONTATTO  
REFERENCE

INDIRIZZO  
ADDRESS

TELEFONO  
PHONE

FAX

E-MAIL



# farbo

## SPECIAL

QUANTITÀ  
QUANTITY

Per ordine  
Each order

Annuale  
Yearly

### DESCRIZIONE DELL'APPLICAZIONE APPLICATION DESCRIPTION

### DATI TECNICI TECHNICAL DATA

ALESAGGIO  
BORE .....

CORSA  
STROKE .....

GUARNIZIONE  
SEALS

NBR     PUR     Viton®

MATERIALE DELLO STELO  
SHAFT MATERIAL

Acciaio C40 cromato     Inox AISI cromato  
Stell C40 with chrome coating    Inox AISI with chrome coating  
 Inox AISI 303     Inox AISI 316

**PRESSIONE DI ESERCIZIO**  
WORKING PRESSURE    min .....  
max .....

**NUMERO DEI CICLI AL MINUTO**  
CYCLE RATE    min .....  
max .....

**TEMPERATURA AMBIENTE LAVORO**  
AMBIENT TEMPERATURE RANGING    min .....  
max .....

**CARICO APPLICATO**  
PAYLOAD .....

**AMBIENTE DI LAVORO**  
WORKING ENVIRONMENT .....

**FLUIDO**  
FLUID TYPE .....

**LUBRIFICAZIONE**  
LUBRICATION .....

**TRATTAMENTI**  
TREATMENTS .....

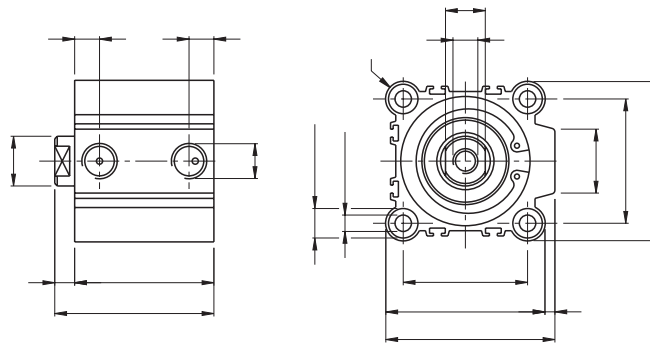
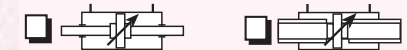
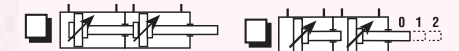
**RITORNO CON MOLLA**  
RETURN WITH SPRING



**Spinta della molla**  
Spring Force .....

**FUNZIONAMENTO**  
WORKING

Pistone magnetico  
Magnetic piston     Paracolpi elastici  
Rubber Bumpers



Richiedeteci i disegni  
dimensionali più idonei  
alla Vostra applicazione.  
Risparmierete tempo e riceverete  
prima la nostra offerta

Please ask our neutral  
drawing for your application,  
you will save time and  
receive our offer soon

### FISSAGGI STANDARD STANDARD MOUNTING



DESCRIZIONE / DESCRIPTION

INDICARE SOLO DATI TECNICI E LE DIMENSIONI VINCOLANTI PER SODDISFARE LA VOSTRA APPLICAZIONE  
PLEASE INDICATE TECHNICAL DATA AND BINDING DIMENSION IN ORDER TO MEET YOUR APPLICATION NEEDS